



# The KiNESIS Project

**Alliance for social innovation in  
shrinking villages**



Co-funded by the  
Erasmus+ Programme  
of the European Union













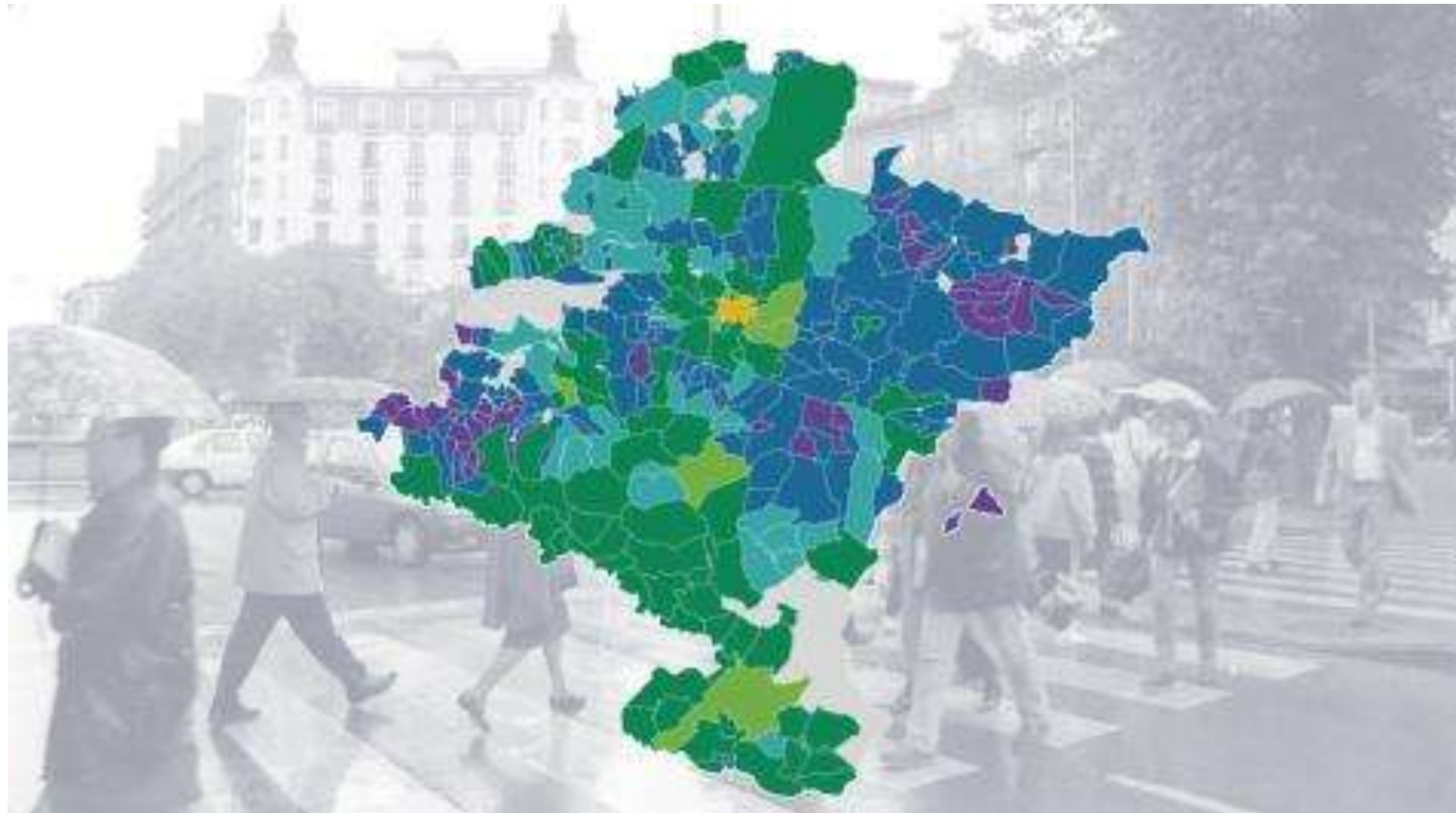




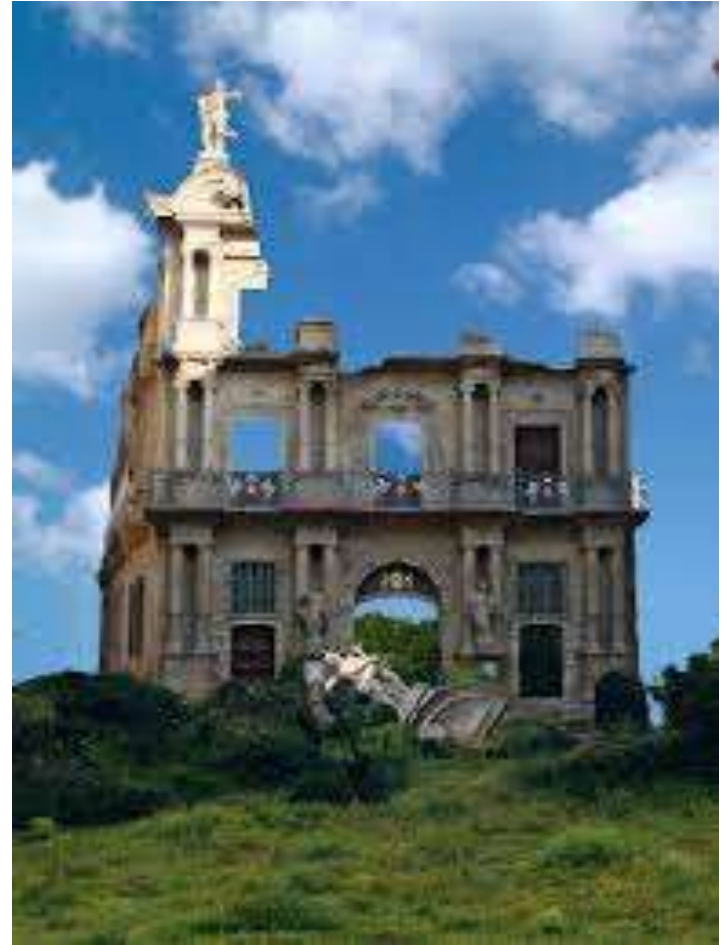
But what is the future?



# Depopulation in Navarra







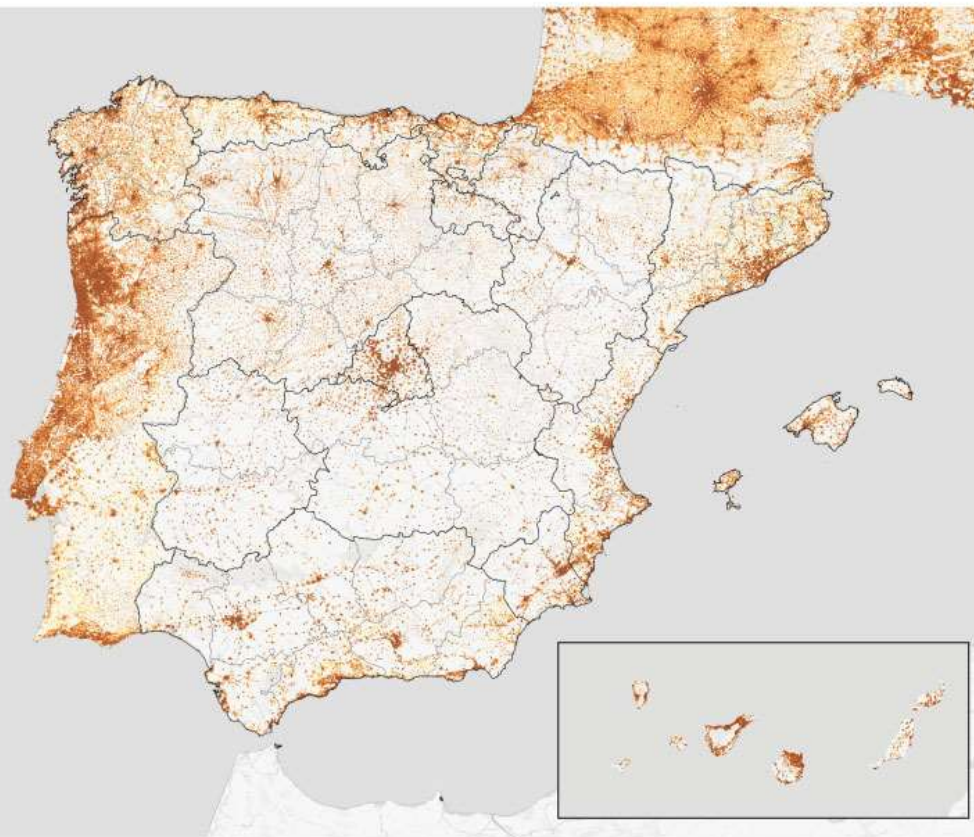
The last inhabitant....





# Distribución de población en España

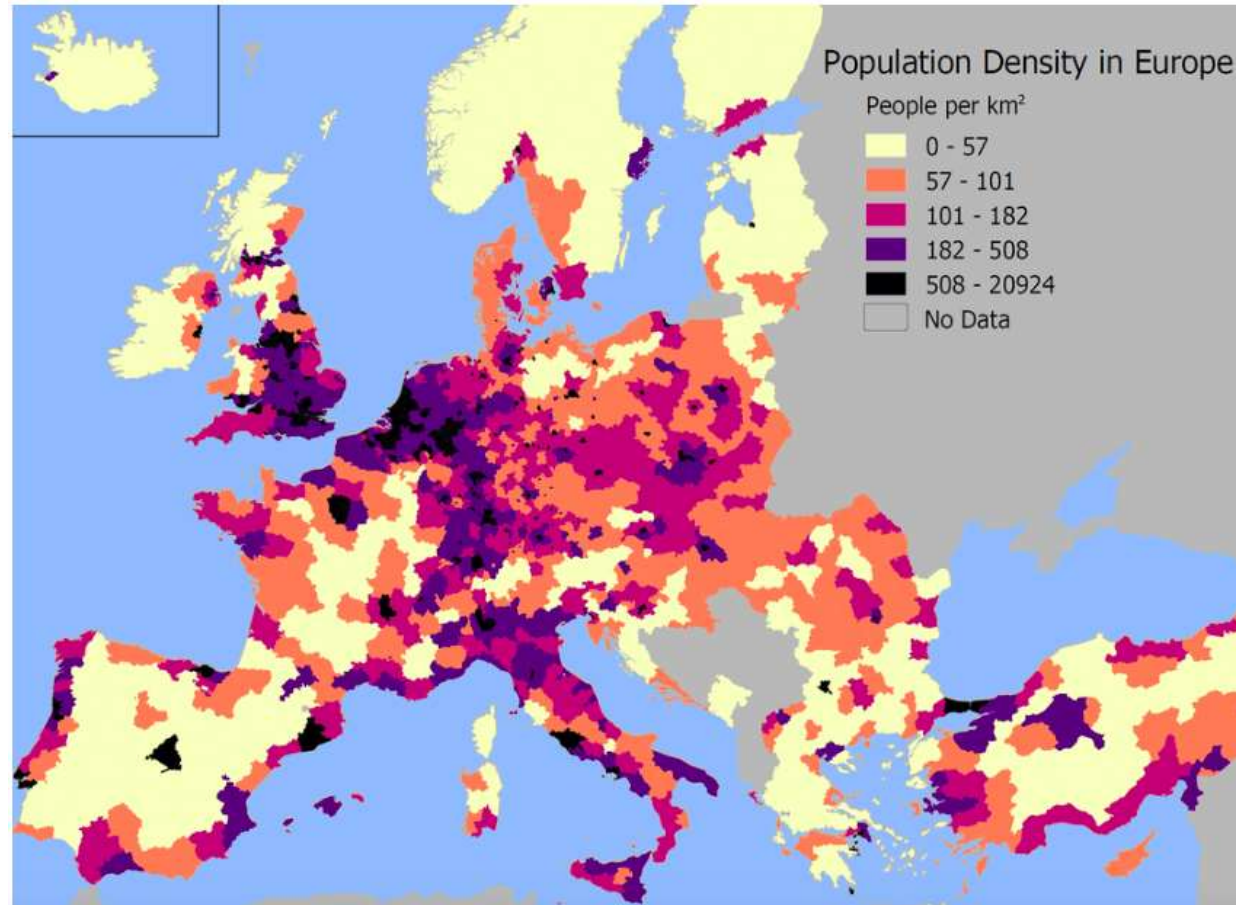
(2018)



Población residente por km<sup>2</sup>  
0 52.000

Fuente: Eurostat

# And Europe?





# The project



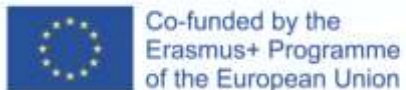
Università degli studi di Napoli  
"L'Orientale"

# Knowledge Alliance for Social Innovation in Shrinking Villages



Grant Agreement 621651-EPP-1-  
2020-1-IT-EPPKA2-KA

Project Coordinator: Johanna MONTI  
University of Naples L'Orientale



Hanze  
University of Applied Sciences  
Groningen



Universidad  
de Navarra



TALLINN UNIVERSITY  
School of Governance,  
Law and Society

ampicraggio



▲ Hochschule Harz  
Harz University of Applied Sciences





# COUNTRIES



# WHAT ARE WE TRYING TO DO?

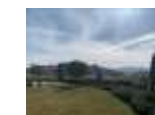
A Knowledge Alliance among academia, NGOs, communities, local authorities, businesses **to develop multidisciplinary activities in shrinking areas with the aim of promoting and fostering ideas, projects, workforce, productivity and attractiveness:**

- i) **revitalising depopulated areas** by stimulating entrepreneurship and entrepreneurial skills;
- ii) **creating local living laboratories**, shared at European level, in which the exchange of knowledge, best practices, experiences can help promote social inclusion and entrepreneurial development;
- iii) **experimenting with new, innovative and multidisciplinary approaches** in teaching and learning;
- iv) **facilitating exchange, flow and co-creation of knowledge** at a local and global level.

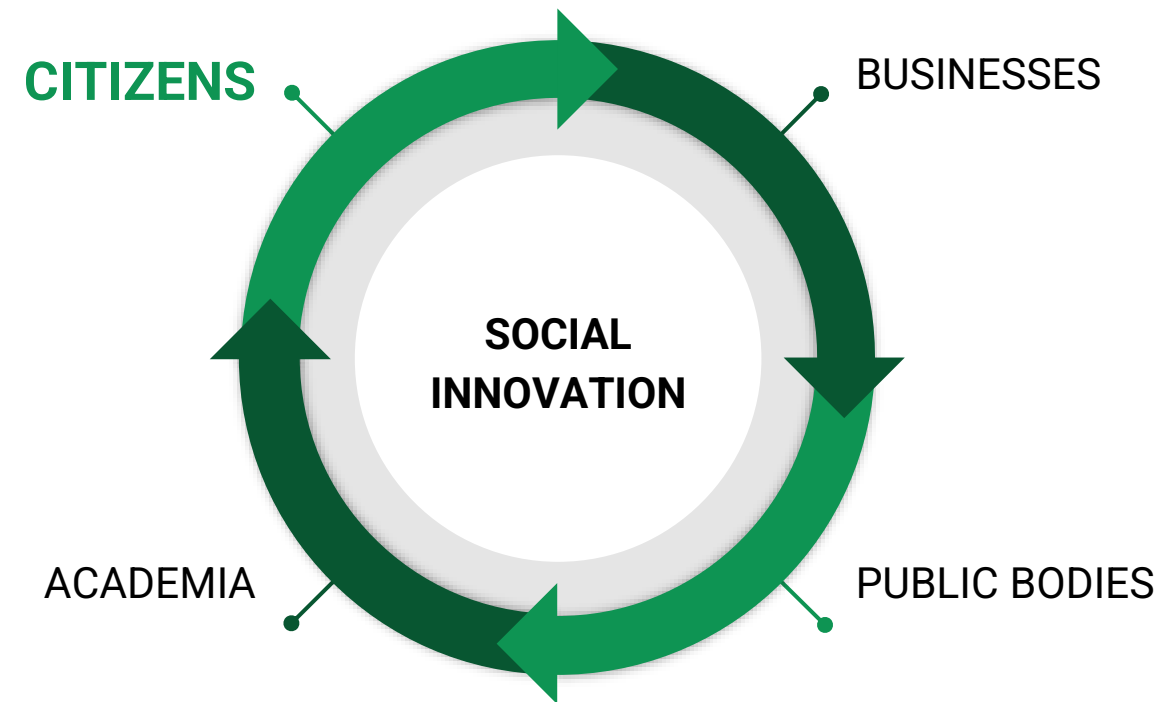
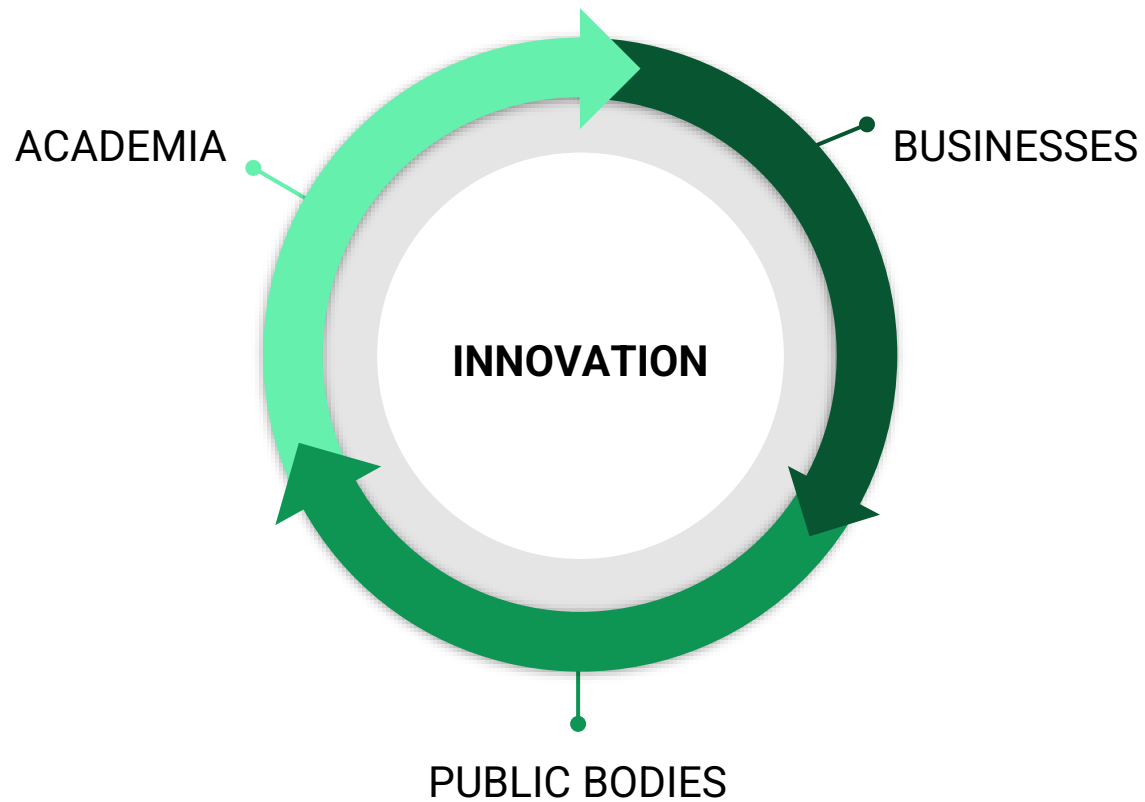




# WHAT HAVE WE DONE SO FAR?



# Social Innovation





# WHY IS OUR APPROACH INNOVATIVE?

## WHY WILL IT BE SUCCESSFUL?



The main features of our new approach are:

- **cooperation among different levels of education institutions** (for research and applied science). Together they will deliver data which is useful for the shrinking areas, for upscaling the programme to similar areas;
- **diverse and high-performance teams** on an educational level, by combining and contaminating the different backgrounds
- **provision of proof-of-concept** using pilot tests to demonstrate the transferability and upscaling of the programme;
- creation of **a new model of training** linked to the solution of specific social problems;
- **expertise from students (near-experts) and institutions** to find solutions to fight all the problems related to shrinking areas and to support the local communities and enterprises with their knowledge;
- training carried out by means of assignments/research in **real-life cases**.

In this way, **KiNESIS will help connecting education to real life society**;

- internships based on **experiential learning and peer-learning**;
- a **holistic programme**, providing research/assignment, supervision, real-life cases to assist a community.
- improvement of internship programs by adding an **intercultural dimension** to them..

Thanks to this new, **holistic and inclusive approach**, KiNESIS aims at obtaining outstanding results for the students, HEIs, enterprises and the shrinking areas.



¿

?





Thank you! ¡Gracias! Eskerrik asko!

