



European and national energy challenges and the regional community response

Prof. Tom Postmes

Scientific Director

Knowledge Centre Earthquakes &
Sustainable Development





Short intro

- › University of Groningen (founded 1614)
 - 6,000 staff
 - 30,000 BaMa students
 - 2,000 PhD's
 - Key topics:
 - Sustainable Society
 - Energy(6 MSc programmes)
- › Our own research unit
 - Social and Environmental Psychology
 - 14 staff
 - 30 PhD's, 3 MSc programmes



Linda Steg



Tom Postmes

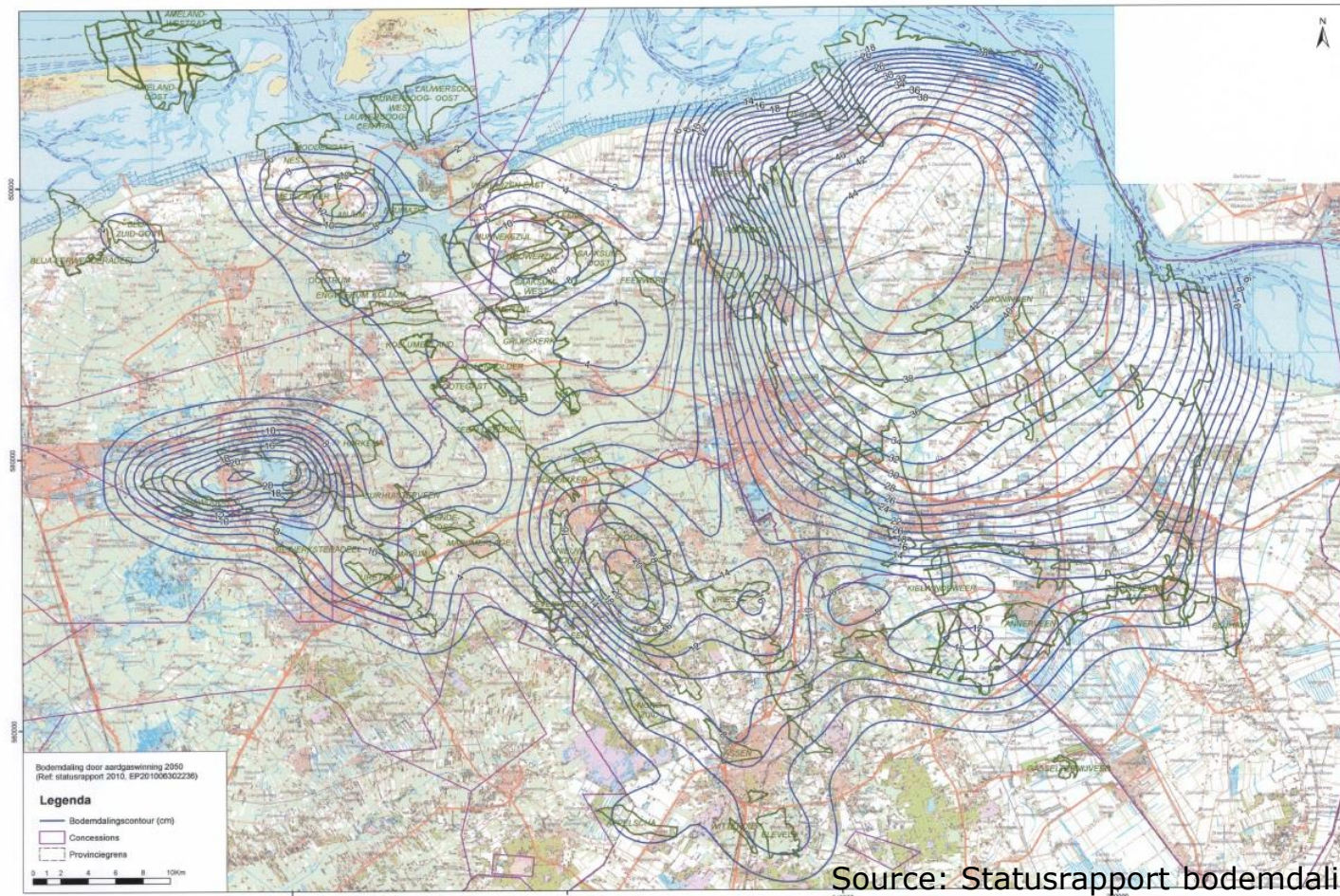
Gas fields in North Netherlands

Largest in Europe



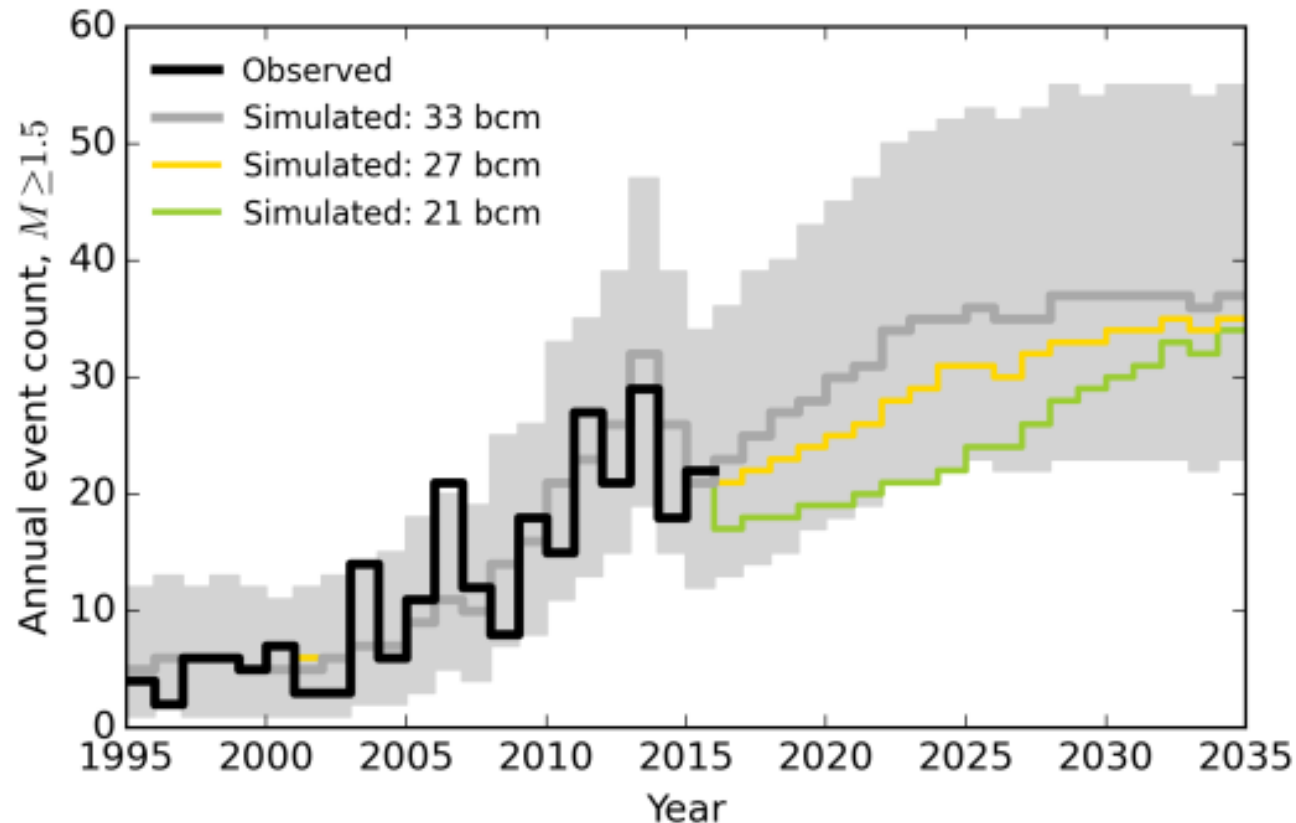
Gas fields in North Netherlands

Densely populated



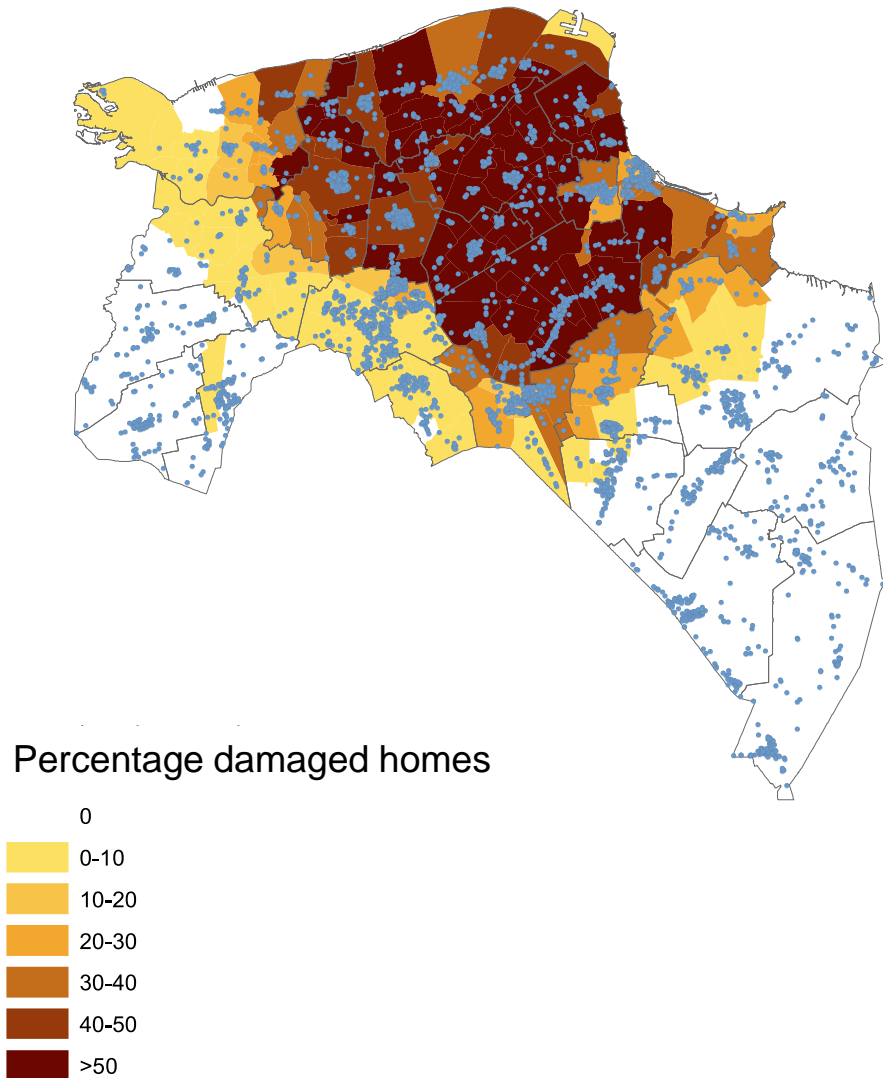
Source: Statusrapport bodemdaling 2010, NAM

Induced earthquakes



Consequences

- > Material damage:
 - 410,000 people at risk
 - 100,000 have damage
 - 25,000 multiple times
- > Immaterial damage:
 - Security, Health, Economic
- > Security of energy provision
 - Erosion of public support





Challenges and opportunities

- › National, corporate, international
 - Diminishing public support for gas extraction
 - Need to speed up energy transition
- › Regional
 - Intense distrust
 - top-down policies no longer acceptable
 - Growing number of community-based initiatives
 - Growing demand for smart energy solutions



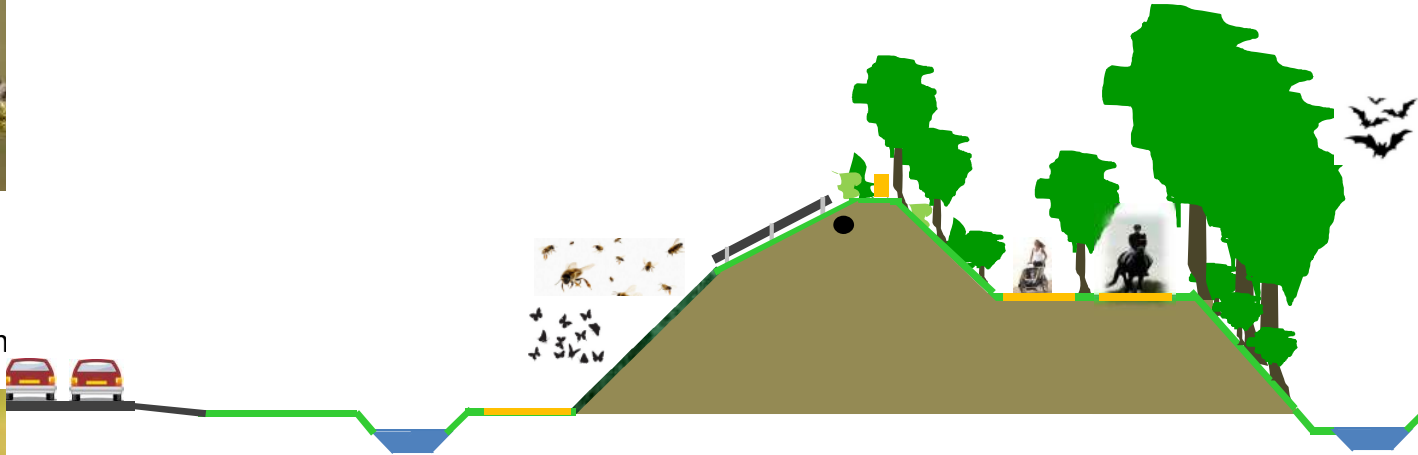
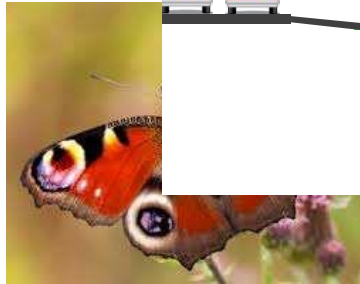
ZONNEWAL
OOSTWOLD

Baanbrekende hybride:

duurzame energie lokaal met ecologie, recreatie, landschap, woon- en leefkwaliteit, educatie en innovatie



landschappelijke inpassing
recreatieve ruimte
ecologische waarde van 5-6 h



1500 x 40 meter (6 hectare gebied)



nment, culture and

agenda

> Focused on future
development of

- Sustainability: **energy neutral living**, economic viability
- Governance and justice: a healthy citizen-government relation, equity, democratic and legal due process



What does our university have to offer?

- Neutral and reliable partner
 - High levels of trust in local community
- Expertise on smart community solutions, legal and economic aspects
 - Social dynamics of sustainability
 - Bottom-up community formation, energy cooperatives, collective action
- Ability to involve partners across disciplines and countries



Developing European partnerships

- › We seek to establish collaborations with other regions that face similar challenges. This case can be upscaled and made relevant for EU.
- › We see cross-linkages between Social Sciences, Humanities and STEM sciences within UNI-SET as critical to developing effective community support for smart solutions.



Human behavior within SET?

- › Citizens relate to energy in multiple ways
 - Not just consumers or prosumers
 - Humans with values, politics, habits, prejudices, entitlements, children, etc.
- › Social dynamics of adoption and innovation
 - Limited success of top-down change (technology push)
 - Improving end user involvement at all stages
 - Develop sustainable bottom-up approaches



Questions and comments

Contact:

- t.postmes@rug.nl (Tom Postmes, scientific director)
- s.e.smit@rug.nl (Sharon Smit, director sustainable society)