

# 2019 EUA-CDE ANNUAL MEETING

## The societal dimension of doctoral education

Luke Georghiou

University of Manchester and Chair Steering Committee EUA Council  
for Doctoral Education

@lukegeorghiou @euacde

Hosted by University of Brescia

12-14 June 2019 | Brescia, Italy

## About EUA-CDE

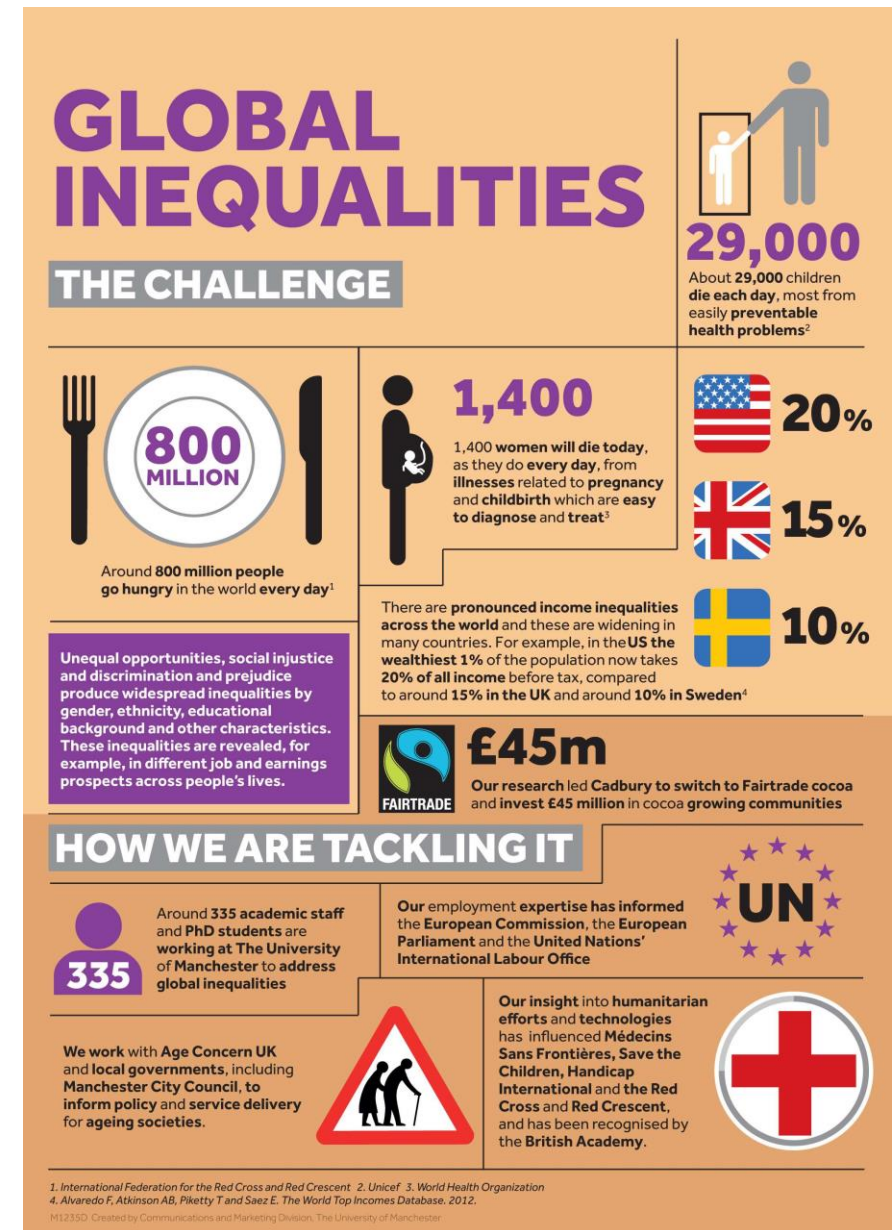
- A community of academic leaders and professionals from 250+ universities in 35 countries
- Recently celebrated 10<sup>th</sup> Anniversary
  - Salzburg Principles: *“The core component of doctoral training is the advancement of knowledge through basic research. At the same time it is recognised that doctoral training will increasingly meet the needs of an employment market that is wider than academia.”*
- Today provide a raft of activities to drive the core goal of collaboration, debate and exchange of good practices among members and to give a voice to doctoral education in Europe

### Recent themes

- Research integrity
- Open science and the digital transformation
- Structures for doctoral education
- Inter-institutional collaboration in doctoral education
- Career development and tracking
- Diversity
- Doctoral candidates’ wellbeing

# Increasing importance of global challenges for universities

- Rising significance of the UN SDGs
  - an opportunity to communicate and align our impact work against the world's democratically-agreed priorities in internationally consistent language
  - Increasingly a yardstick by which impact is measured
- Alignment of research funding around challenges and missions
  - Horizon 2020 and Horizon Europe
- Wider commitment of doctoral candidates to the agenda represented by the challenges
  - Sustainability, energy, water and food security, migration etc



# Societal dimensions of the doctorate

- Research engaging with societal/global challenges
  - Addressing sustainable development
  - Additional skills and methods needed?
  - Inherently interdisciplinary nature of challenges?
  - Social responsibility during doctoral study
  - Contribution of doctoral researchers to institutional impact
- Mobility of knowledge and people
  - Intersectoral mobility with sections of society
  - International mobility North-South/South-North East-West/West-East
  - Communicating research to society
  - Employment and careers

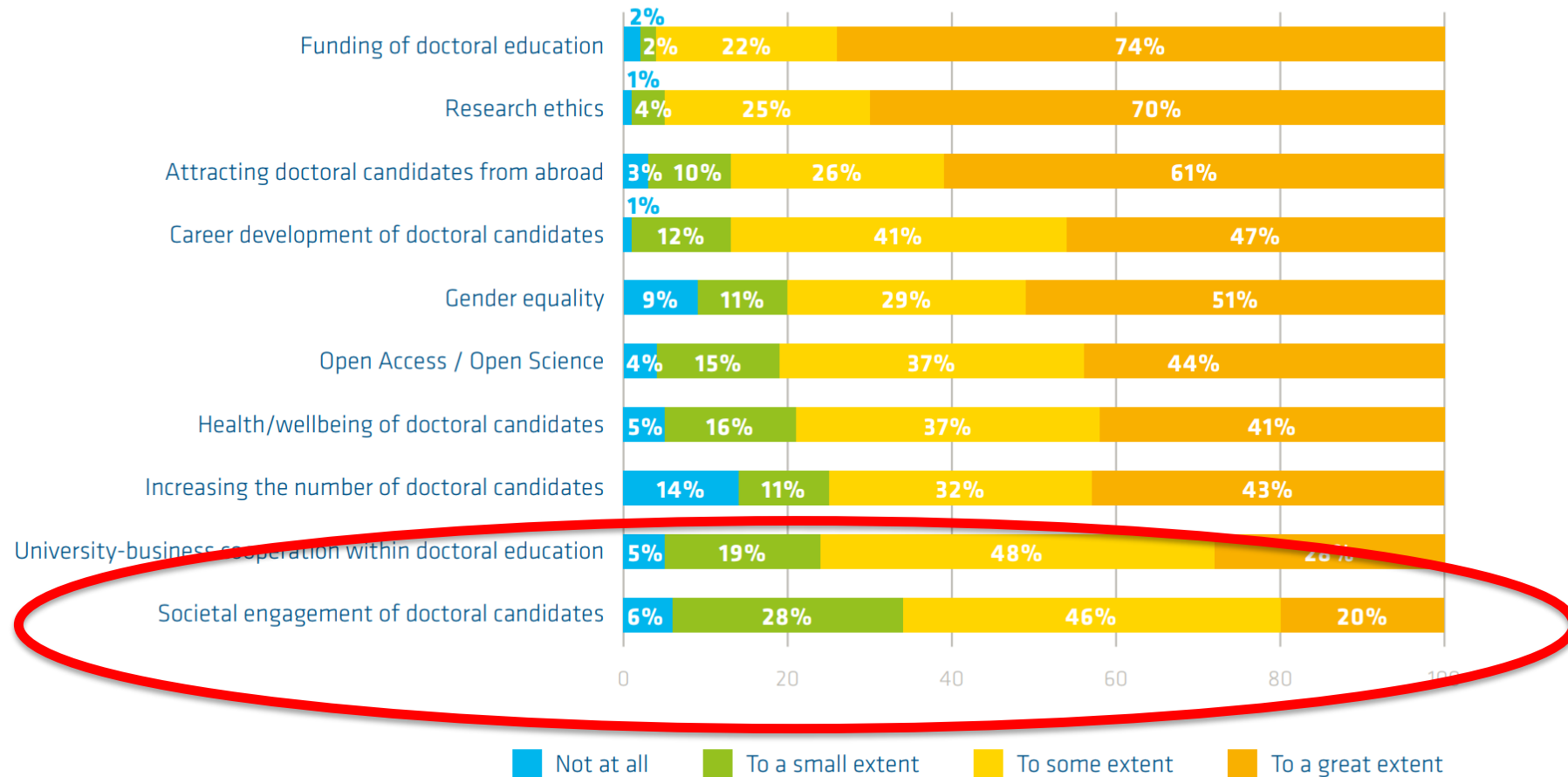
## SUSTAINABLE DEVELOPMENT GOALS



# CDE survey shows societal engagement not top priority for institutions but still significant for 2/3 of institutions

Figure 20: Strategic priorities

To what extent are the following issues currently considered a strategic priority in doctoral education within your institution?





# Our Agenda

- Plenary 1** Doctoral candidates and graduates serving as a bridge between universities and society
- Plenary 2** Contribution of doctoral education to reaching the SDGs
- Parallel sessions I**
- Developing new skills for future challenges
  - Societal engagement of doctoral candidates
  - Communicating research to society
- Plenary 3** Societal impact and societal responsibility of doctoral education
- Parallel sessions II**
- Developing skills for current societal challenges
  - Intersectoral mobility
  - Doctoral education: a tool for the development of internationalization
  - Initiatives to promote intersectoral mobility during and after a PhD
- Plenary 4** Communicating doctoral research and doctoral education

