

Developing a plan to support public and patient involvement in health and social care research



Whiston, L., Amering, M., Dick, S., Giffin, M., Kennan, A., Murphy, P., Scott, T., Walsh, J., Burke, H., Gallagher, P., MacGabhann, L., Matthews, A. and Lambert, V.



Dr. Lucy Whiston
DCU PPI Ignite Research Fellow,
School of Nursing, Psychotherapy and Community Health, DCU

Public and patient involvement (PPI)

PPI is 'research being carried out 'with' or 'by' members of the public rather than 'to', 'about' or 'for' them' (1)

Who

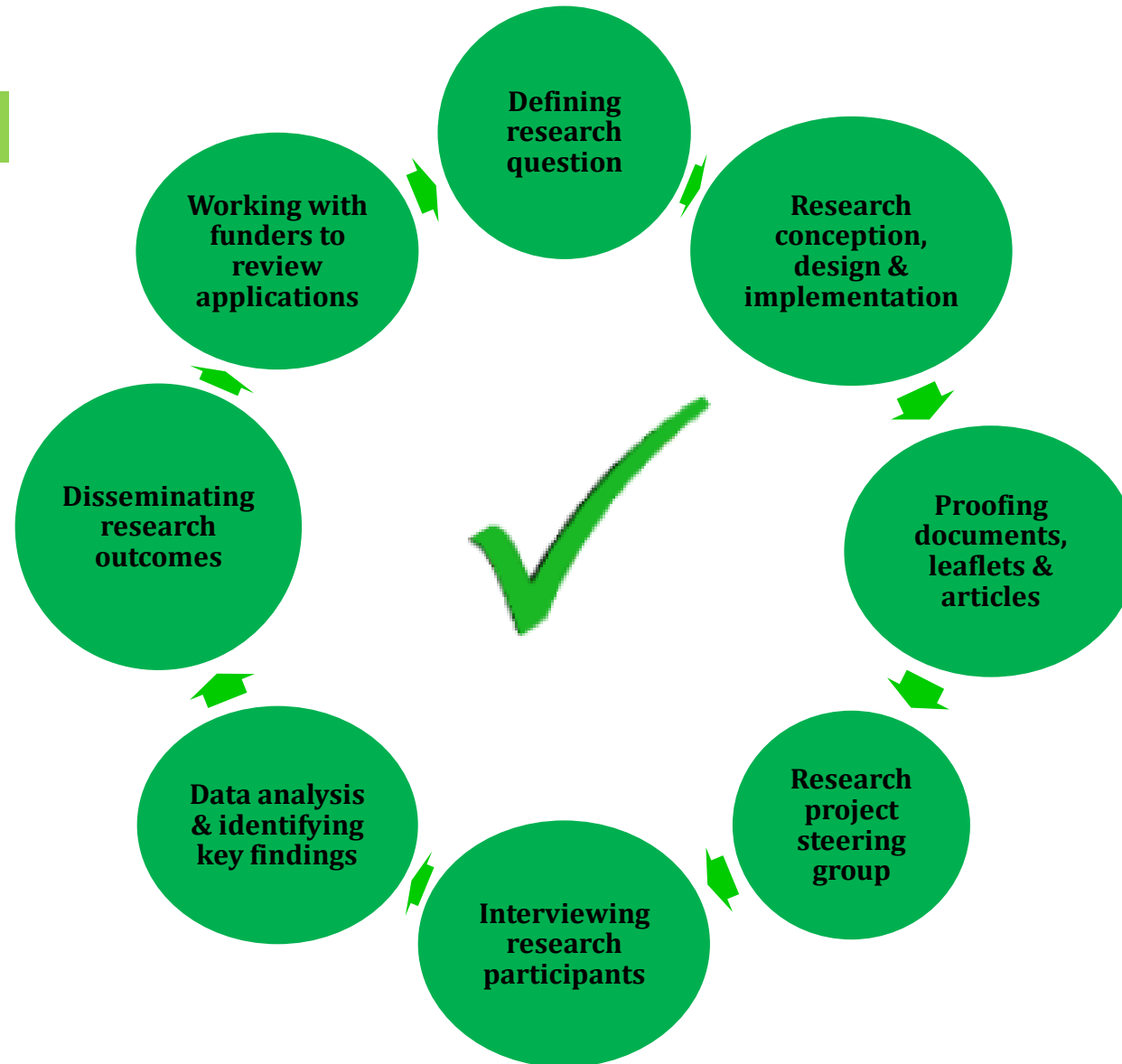
- Those whom the research will impact or affect

What

- Engagement X
- Participation X
- Involvement ✓

PPI is..... Public/patients as active partners

Involved in...



Context

Importance of PPI

- Growth and interest (2)
- Moral/ethical arguments
- More credible, higher quality research (2-6)
- Research and funding body support

Supporting PPI

- Multipronged (4,7)
- Co-designed for specific settings (8)



Methods

Aim

Co-design of a plan to support PPI in DCU health and social care research.

Design

- 6 dialogue groups
- Informed by – Available literature
 - Previous DCU PPI Ignite data collection
 - EDGE Tool application
- PPI



Methods

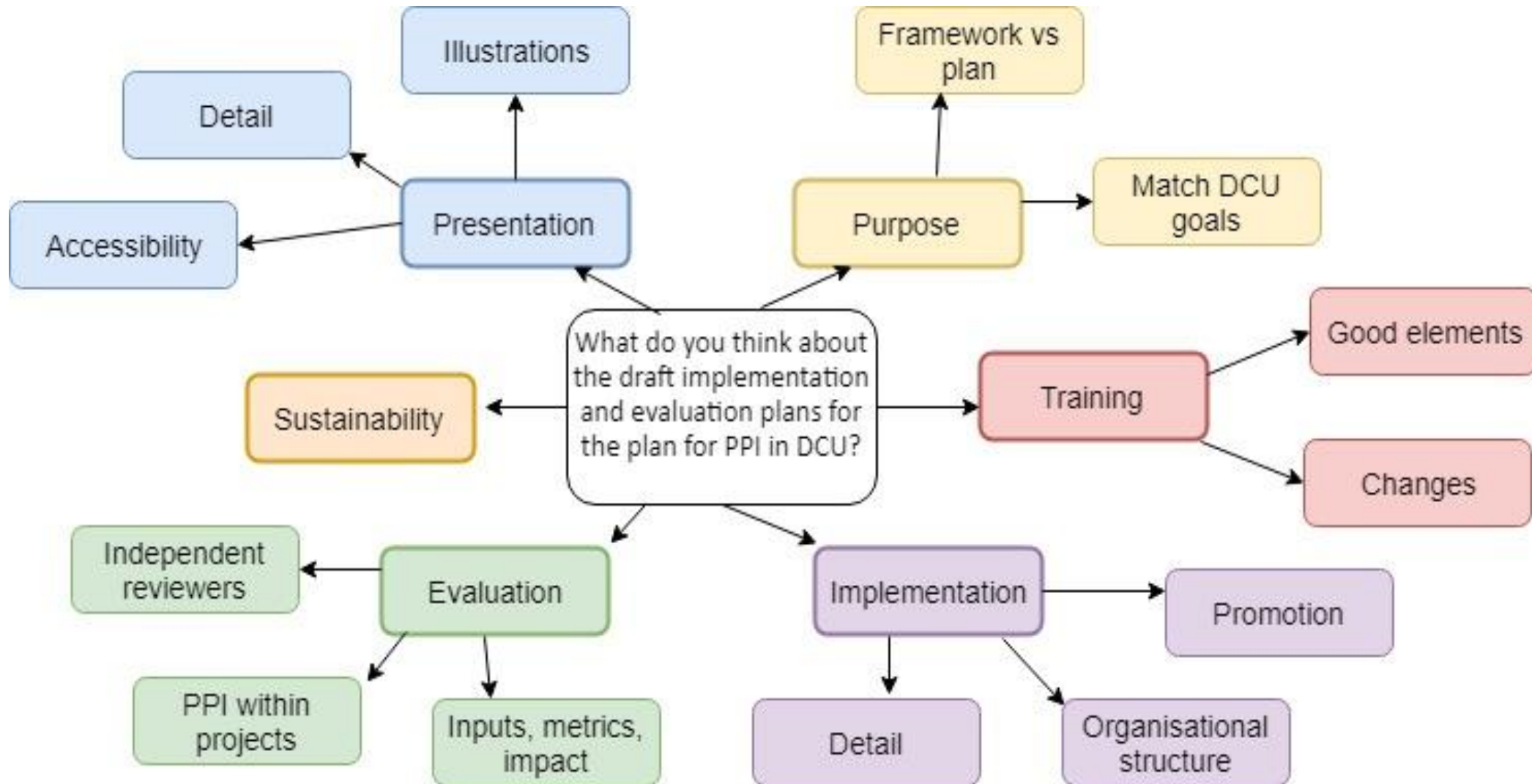
Participants

Characteristic	N= 60	100.0%
Stakeholder group ^A		
Patient/Public/Patient organisation	19	31.7
Research/Academic/Support staff	39	65.0
Clinician/Policy leader	7	11.7
Other	0	0
Missing	-	-
Age		
18-40	19	31.7
41-65	28	46.7
65+	13	21.7
Missing	-	-
Gender		
Male	19	31.7
Female	41	68.3
Missing	-	-



Methods

Thematic Analysis



Key Themes

Development and feedback

- *'It's really nice to see it coming in to something that you could see being used in the future'* [DG03].
- *'I think a little bit more clarity about the steps, the roles and responsibilities and some more clarity as to who is doing what, where and how'* [DG05]

Mutual understanding

- *'What is the PPI role? What do researchers want and what can patients do? What is the point?'* [DG01]
- *'It just needs some very basic principles in place as to what it's all about'* [DG02].



Key Themes

Training and support

- *'There can sometimes be a little bit of disconnection between patients and doctors ... it would be very important that if there's training it's done all together to break down some of that paternalism'* [DGC]
- *'Put together say a panel of 150 [patients/public]'* [DG02]

Communication and accessibility

- *'Accessibility is a big thing and that's obviously you've got the language but also physically for people so who can travel, who can't travel'* [DG02]

Key Themes

Implementation and sustainability

- Making PPI *'as easy as possible'* [DG01]
- *'The continuity of PPI in DCU is going to be important because what's happening when we sit here today and what happens in four years is a changeover and what happens then?'* [DG04]



Process

Practicalities

- Context
- Facilitation
- Location and timing
- Continuity
- Impact of PPI

Unexpected benefits

Transferability



Ollscoil Chathair
Bhaile Átha Cliath
Dublin City University

Thank you

Questions?



www.dcu.ie/ppi

ppi@dcu.ie or lucy.Whiston@dcu.ie

[@PPI_Ignite_DCU](https://twitter.com/PPI_Ignite_DCU)



References

1. INVOLVE. Briefing notes for researchers: involving the public in NHS, public health and social care research [Internet]. Eastleigh: INVOLVE; 2012 [cited 2018 Jun 22]. Available from: http://www.invo.org.uk/wp-content/uploads/2014/11/9938_INVOLVE_Briefing_Notes_WEB.pdf
2. Vale CL, Thompson LC, Murphy C, Forcat S, Hanley B. Involvement of consumers in studies run by the Medical Research Council Clinical Trials Unit: Results of a survey. *Trials* [Internet]. 2012 Jan 13;13(1):9. Available from: <https://doi.org/10.1186/1745-6215-13-9>
3. Ashcroft J, Wykes T, Taylor J, Crowther A, Szmukler G. Impact on the individual: what do patients and carers gain, lose and expect from being involved in research? *Journal of Mental Health*. 2015;1–8.
4. Domecq JP, Prutsky G, Elraiyah T, Wang Z, Nabhan M, Shippee N, et al. Patient engagement in research: a systematic review. *BMC health services research*. 2014;14(1):89.
5. Hayes H, Buckland S, Tarpey M. Briefing Notes for Researchers: public involvement in NHS, public health and social care research [Internet]. Hampshire, England: INVOLVE; 2012 Feb [cited 2017 Dec 14]. Available from: http://www.invo.org.uk/wp-content/uploads/2014/11/9938_INVOLVE_Briefing_Notes_WEB.pdf



References

6. Brett J, Staniszewska S, Mockford C, Herron-Marx S, Hughes J, Tysall C, et al. Mapping the impact of patient and public involvement on health and social care research: a systematic review. Health Expectations. 2012;

7. National Co-ordinating Centre for Public Engagement. Introducing the EDGE Tool: Self-assessing your support for public engagement [Internet]. Bristol: National Co-ordinating Centre for Public Engagement, University of Bristol; 2010 [cited 2018 Feb 22]. Available from: https://www.publicengagement.ac.uk/sites/default/files/publication/introducing_the_edge_tool.pdf

8. Greenhalgh T, Hinton L, Finlay T, Macfarlane A, Fahy N, Clyde B, et al. Frameworks for supporting patient and public involvement in research: Systematic review and co-design pilot. Health Expectations [Internet]. [cited 2019 Apr 23];0(0). Available from: <https://onlinelibrary.wiley.com/doi/abs/10.1111/hex.12888>

