

Articulating an Educational Innovation Agenda at Tilburg University

Gert-Jan Leenknecht & Nikos Basbas, February 8, 2024

Context | Tilburg University

- research university
- Humanities, Social sciences, Digital Sciences
- 20.000 students
- 1.300 academic staff
- 1.000 support staff
- ~20 innovation staff



Challenge

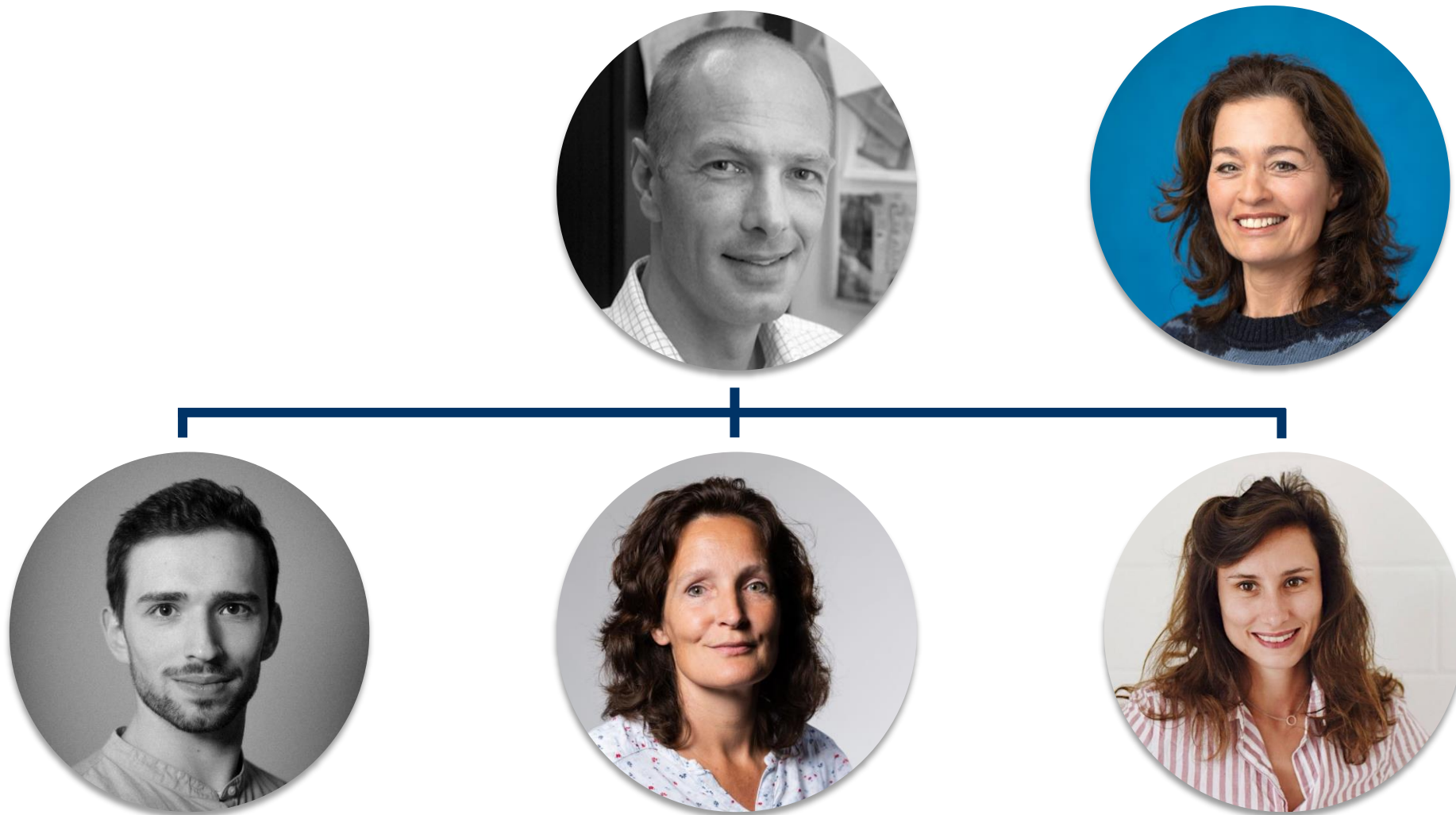


Long-term goal



TUNED IN

Team



Let's take it back to

September 2023

Activity 1 | Promotional video

The screenshot shows a LinkedIn profile for Gert-Jan Leenknecht, an Associate Professor of Constitutional Law and Academic Lead of TUNED IN. The post, dated 5 months ago, announces his new role at Tilburg University and includes a video. The video features Dr. Gert-Jan Leenknecht speaking, with a caption that reads "for Innovation and development of education." The video player shows a progress bar at 3:09. The post has 39 comments and 3 reposts. The right sidebar contains an advertisement for a 50% discount on LinkedIn Premium and a footer with links to About, Accessibility, Help Center, Privacy & Terms, Ad Choices, Advertising, Business Services, and the LinkedIn app.

Gert-Jan Leenknecht • 1st
Associate Professor of Constitutional Law | Academic Lead TUNED IN
5mo • 🌐

Today marks the start of a new and exciting role at Tilburg University for me. The Board has appointed me Academic Lead of TUNED IN, the Tilburg University Network for Educational Development and Innovation. In the video below, I briefly explain the purpose and ambition of our new network.

Dr. Gert-Jan Leenknecht
Academic Lead TUNED IN

for Innovation and development of education. 3:09

You and 203 others 39 comments • 3 reposts

Reactions

Like Comment Repost Send

Add a comment...

Ad Nikos, enjoy 50% off 2 months of LinkedIn Premium!
Get a boost with this exclusive offer.
[Get 50% off today](#)

About Accessibility Help Center
Privacy & Terms Ad Choices
Advertising Business Services
Get the LinkedIn app More

LinkedIn LinkedIn Corporation © 2024


Gert-Jan Leenknecht

Associate Professor of
Institutional Law | Academic Lead
TUNED IN

[View full profile](#)

University Network for Educational Development and Innovation.
In the video below, I briefly explain the purpose and ambition of our new
network.



   You and 203 others

39 comments · 3 reposts

Reactions



Get a boost v

[Get](#)

About Ac

Privacy & T

Advertising

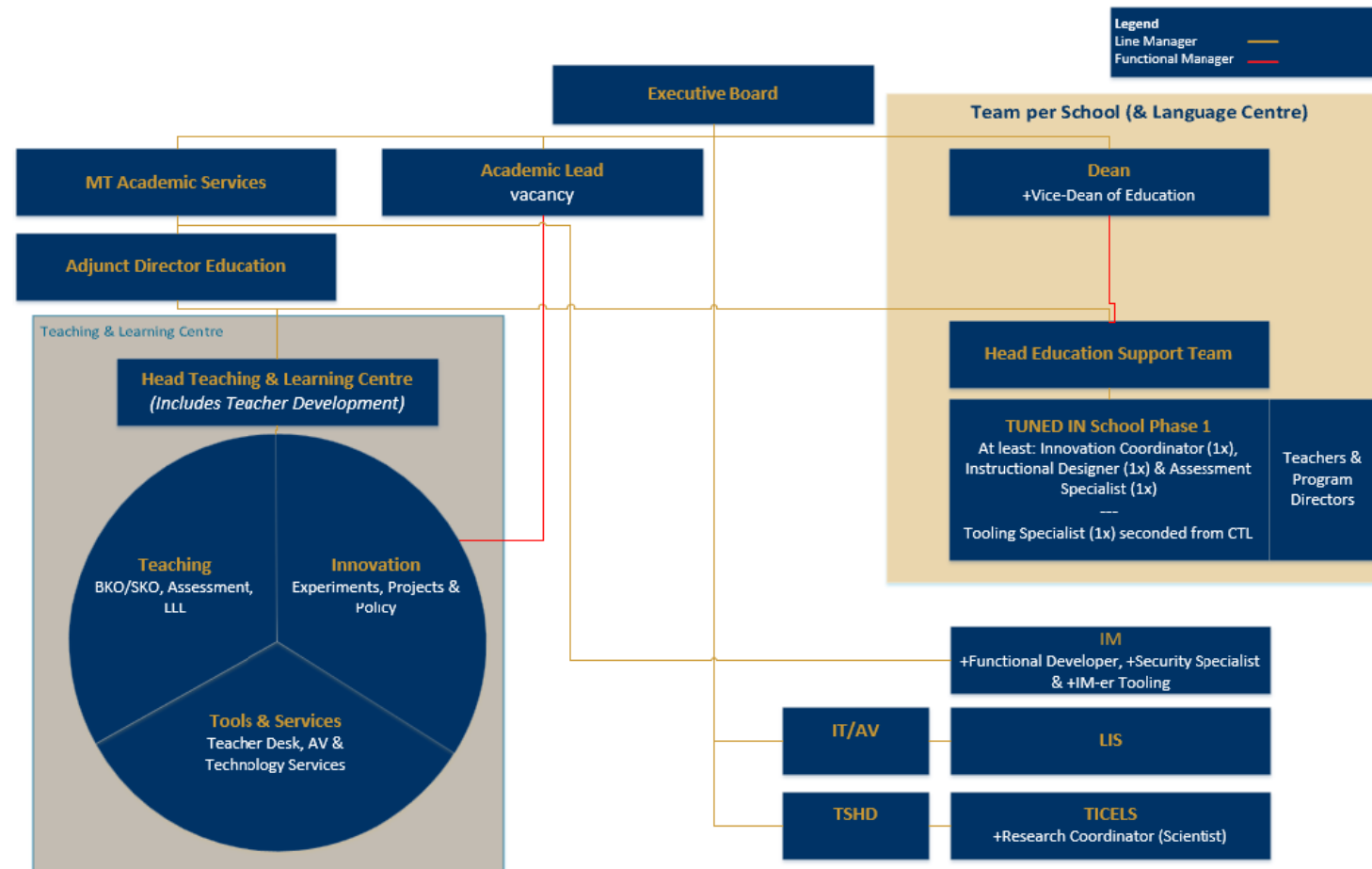
Get the

[LinkedIn](#) Lin

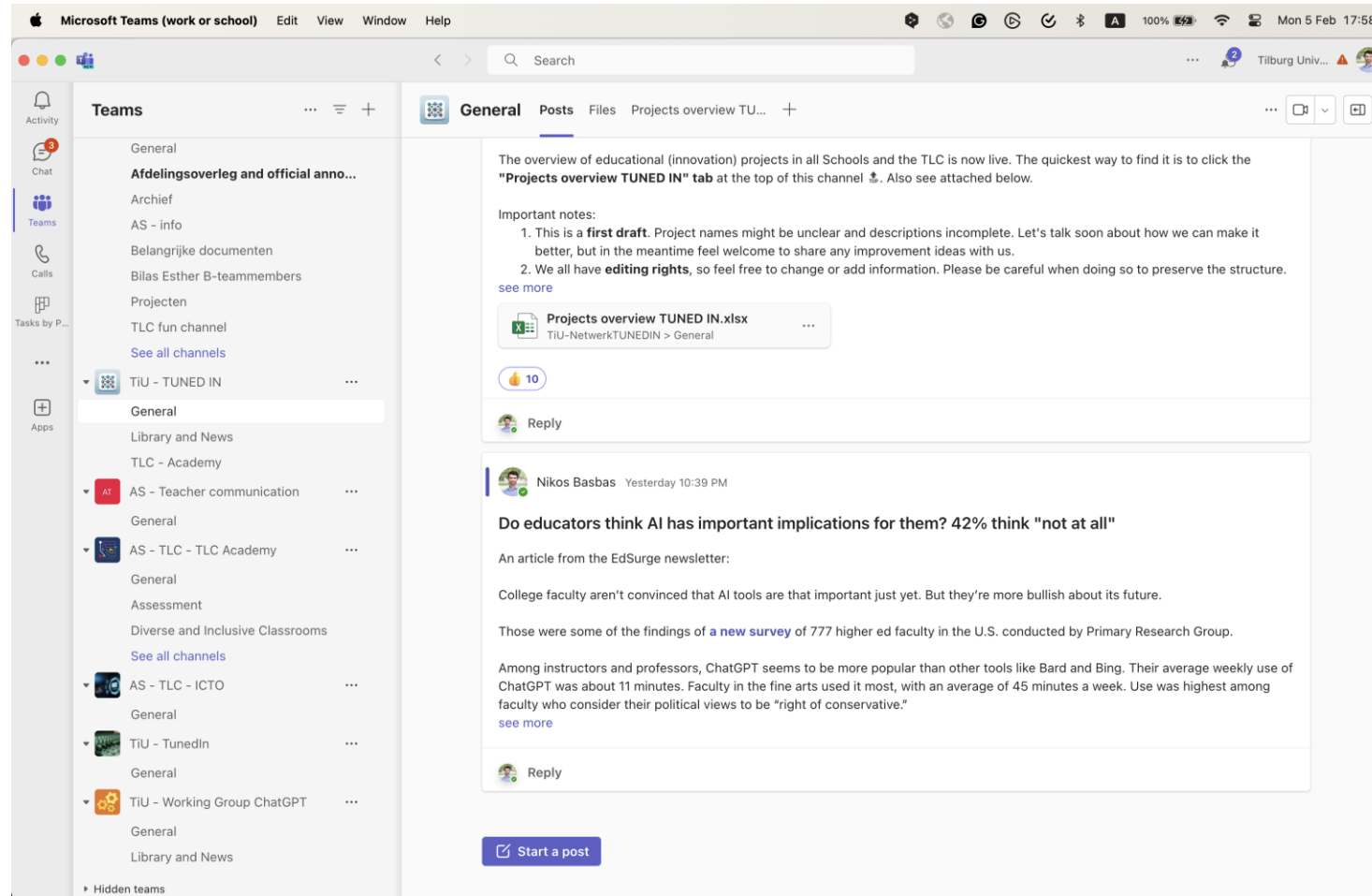
Activity 2 | Kick-off event



Activity 2 | Kick-off event



Activity 3 | MS Teams



Activity 4 | Edu innovation projects overview

Excel

File

Edit

View

Insert

Format

Tools

Window

Help

AutoSave

Projects overview TUNED IN Saved

</

en studenten zonder afbreuk te doen aan de vaardigheid?	Completed	TLS
en mogelijke grondwetswijziging. Zowel studenten als de	Completed	TLS
ordt in de colleges van het bachelorvak Europese Rechtsg	Completed	TLS
dient te betogen of zij een belanghebbende zijn in de zin	Completed	TLS
boom doorlopen op basis van een brief van "De Burger" a	Completed	TLS
nt verbeterd worden? Hoe ziet de kennisoverdracht eruit? Hoe kan er meer ruimte voor discussie bereikt worden?	In Progress	TLS
de aanpassing van dingen die al als positief ervaren worden binnen de cursus. Is het mogelijk om studenten actief met een casus aan de slag te l	In Progress	TLS
en studenten zitten vaak passief in de het college. Hoe kunnen we studenten activeren en meer met de stof aan de slag laten gaan? Hoe kan de i	In Progress	TLS
rden en hoe kan de organisatie van toetsing in zijn algemeenheid verbeterd worden? Hoe kan de samenwerking anders vormgegeven worden?	In Progress	TLS
het college door gebruik te maken van interactieve werkvormen? Hoe help je studenten met het spreken en begrijpen van het Engels.	In Progress	TLS
en en welke werkvormen sluiten hierbij aan? Hoe kunnen studenten gemotiveerd worden om actief te participeren in de werkgroepen?	In Progress	TLS
it kunnen worden voor studenten en docenten?	In Progress	TLS
	In Progress	TLS
aat weergegeven wat de mogelijkheden binnen en buiten	Completed	TLS
	In Progress	TLS
	In Progress	TLS
er	Completed	TLS
	Completed	TLS
	Not Completed	TLS
numbers	Not Completed	TLS
r SUTQ Projects	Completed	TLS
	Completed	TLS
rt	Completed	TLS
	Not Completed	TLS
	Completed	TLS
	Completed	TLS
	In Progress	TSB
	In Progress	TSB

Activity 5 | Communications plan

3H-model




Activity 6 | Innovation agenda

1. GenAI
2. Flexible education
3. Skills and character education
4. Digital learning materials

Activity 7 | Learning spaces grant



Activity 8 | Special interest groups



TILBURG UNIVERSITY

Understanding Society

English Search

- Home
- Study programs
- Research
- Partnerships and service
- Campus
- About Tilburg University
- Current
- Contact and visit

Overview of current SIGs

- ♦ **SIG Assessment:**
This SIG brings together the assessment specialists and is focused on enhancing lecturers' assessment skills through training and workshops. It plays a key role in university-wide initiatives for innovative assessment techniques and offers advice on various educational assessment processes to consistently improve assessment quality at every level of the university.
Contact: [T.C. van der Wal](#)
- ♦ **SIG Experiential and Transformational Learning**
Contact: [T.C. van der Wal](#)
- ♦ **SIG Internationalized and Inclusive Classroom:**
This SIG aims to facilitate a platform for teachers and staff to collaborate and share their insights and expertise in fostering intercultural, diverse, and equitable learning environments for their students.
Contact: [T.C. van der Wal](#)
- ♦ **SIG Character Building**
We want to educate our students to become critical, independent thinkers who know how to act responsibly. We help them develop knowledge and skills and the moral character to get things done together with others.
Contact: [T.C. van der Wal](#)
- ♦ **SIG Internships**
Contact: [T.C. van der Wal](#)

Are you interested in setting up a SIG yourself? Please contact TLCacademy@tilburguniversity.edu and we will get in touch on how we can support your initiative.

Contact us

Future activities

- Internal “Who’s who”
- Program directors conference (internal)
- Teaching conference (internal)

Other lessons learned

- Pay attention to stakeholder *wishes*
- Balance relationships and feasibility
- Deliver quickly

Thank you