

EUniWell

European University for Well-being

Moving from project to collaborative network
A European University Alliance's approach to support
its researchers at risk



UNIVERSITÀ
DEGLI STUDI
FIRENZE

Universität
Konstanz



Linnæus University



Nantes
Université

SEMMELEWEIS
UNIVERSITY 1769



Lena Kulmala, Office of external relations

Linnæus University, Sweden



With the support of the
Erasmus+ Programme
of the European Union



This project has received funding from the European
Union's Horizon 2020 research and innovation pro-
gramme under grant agreement No 101035821.

EUniWell

11 universities
8 countries



History

Erasmus+ Work Package 6: Creating an identity

Task 6.14: EUniWell scholarship scheme for refugee students and scholars

Working Group 6.14 was formed

Initiative

EUniWell Ukrainian Fellowship Scheme

- Available to academics and researchers affiliated at Taras Shevchenko National University of Kyiv (KNU)
- Based upon available capacity and resources

Erasmus+ grants for student and staff mobility from KNU



History

T6.14: EUniWell scholarship scheme for refugee students and scholars

- *The Ukrainian Fellowship scheme*

EUniWell seed funding projects (refugee students)

Onsite-workshops

- prioritising work
- Sub-group: *Scholarships and support for researchers at risk (incl. PhD)*

Current structure

Wider group; meetings 4-5 times a year / Sub-groups separate meetings

Erasmus+ project phase 2024-2027

WP10 – Towards More Seamless Mobility

- Expand the Ukraine Research fellowship to provide additional opportunities to refugees and other students/academics from Fragile, Conflict-Affected and Violent regions

Activities and future plans

EUniWell Task force for Scholarships and support for researchers at risk



Share information and opportunities through contact person list



Create joint opportunities for EUniWells' researchers at risk

- Apply for EUniWell seed funding for a staff training week

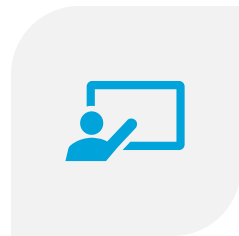


Apply for EU-funding for hosting researchers at risk (PhD/post-doc)

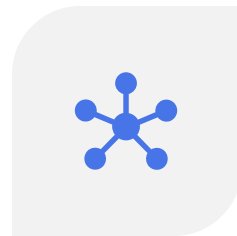
Advantages with a European network



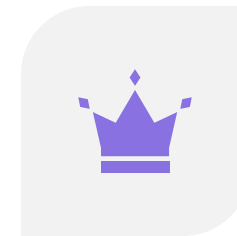
LEARN FROM EACH
OTHER / BEST
PRACTICES



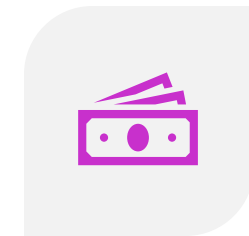
SHARE INFORMATION
AND RESOURCES



STAFF TRAINING
OPPORTUNITIES



HOSTING
OPPORTUNITIES



STRONG ENTITY WHEN
APPLYING FOR EU
FUNDING

Thank you!

lena.kulmala@lnu.se