

# How to get to the 2026 EUA Annual Conference

Registration desk opening times  
Thursday 16 April: 08.00-17.15  
Friday 17 April: 09.00-16.00



Forum Dinner  
[Istanbul Marriott Hotel Asia](#)  
Kayisdagi Caddesi No 3,  
Atasehir, Istanbul 34750



Yeditepe University  
Rectorate Building  
İnönü, Kayışdağı Cd.  
No:326/A, 34755  
Ataşehir/İstanbul,

**SAVE THE MAP!**

## Public transport

### From the airport



- Closest airport: Istanbul Sabiha Gökçen. From there, take the HAVABUS shuttle service to Kadıköy (every 30 minutes.)
- Istanbul International Airport is located 60 km away from the University. From there, you can take Metro 11 or shuttle buses to reach the city centre (European side).

## How to reach the university



By metro:

- From [Bostancı Station](#): take bus 16F, 19F, 14KS.
- From [İçerenköy Station](#), take bus 14KS, 19, 133F.

By metrobus:

- From [Uzunçayır Metrobus Station](#), take bus 19 or 16F.
- From [Söğütlüçeşme Metrobus Station](#), take bus 19F.

## Accommodation

### Recommended Hotels

- Istanbul Marriott Hotel Asia
- Hilton Istanbul Kozyatagi
- Sheraton Grand Istanbul Atasehir

Shuttles will be running between these hotels and the conference venue during the event.

# Good to know about the 2026 EUA Annual Conference

## Currency & Language



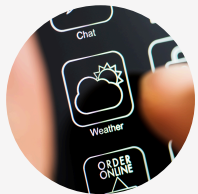
- Official currency of Türkiye is Turkish Lira (TRY)
- The conference will be held in English - no translation

## Telephone Services & Emergency Calls



- International dialing code of Türkiye is +90
- Universal european emergency numbers 112

## Weather



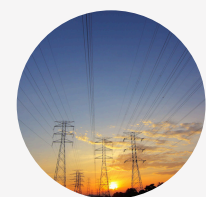
- In April in Istanbul you can expect daytime temperatures between 10-20° with some occasional rain, so a light jacket and umbrella are recommended.

## Photography



- Photos and videos will be taken during the event and may be used by the organisers and Yeditepe University for publications and websites
- Please contact the organisers if needed

## Voltage



In Türkiye, power plugs and sockets (outlets) of type C and type F are used. The standard voltage is 230 V at a frequency of 50 Hz

## Visa requirement

If you are uncertain whether you require a visa to travel to Türkiye, please refer to the information available [here](#)



**SAVE THE MAP!**

