

How to get to the 2026 Learning and Teaching Forum



Registration desk opening times:
Thursday 12 February 08.30-17.30
Friday 14 February, 09.00-13.00

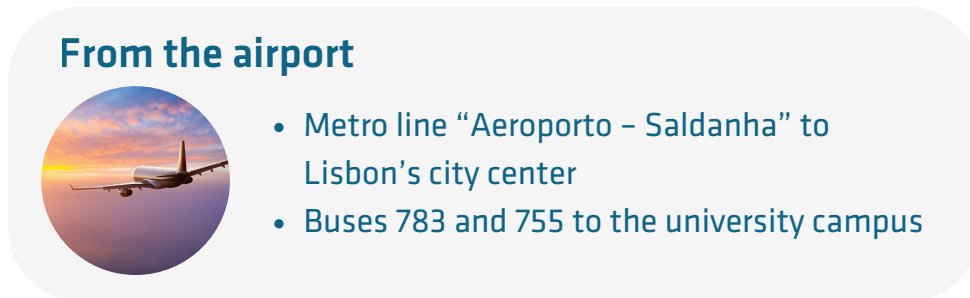


Universidade Católica
Portuguesa (UCP)
Palma de Cima
1649-023 Lisboa,
Portugal



Forum Dinner
Thursday 12 February 19.30
Kais Restaurante Bar
Cais da Viscondessa,
1200-109 Lisboa, Portugal

Public transport



From the airport



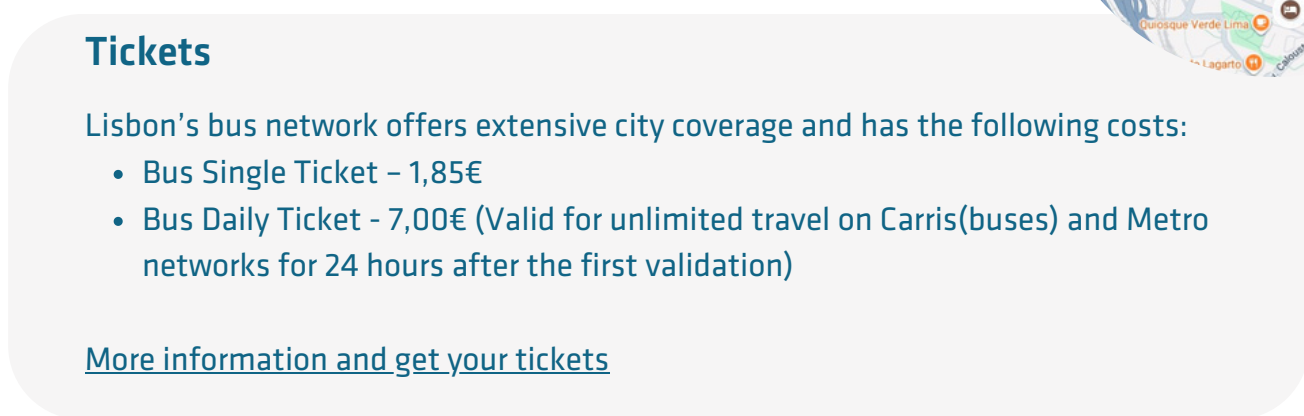
- Metro line “Aeroporto – Saldanha” to Lisbon’s city center
- Buses 783 and 755 to the university campus



Closest stops from University



- “Universidade Católica” [Bus lines 764, 755, and 768](#)
- “Cidade Universitária” Yellow metro line
- “Laranjeiras” Blue metro line
- “Jardim Zoológico” Blue metro Line
- Train station “Sete Rios”



Tickets

Lisbon’s bus network offers extensive city coverage and has the following costs:

- Bus Single Ticket – 1,85€
- Bus Daily Ticket – 7,00€ (Valid for unlimited travel on Carris(buses) and Metro networks for 24 hours after the first validation)

[More information and get your tickets](#)

UNIVERSIDADE
CATOLICA
PORTUGUESA

SAVE THE MAP!



Good to know about the 2026 Learning and Teaching Forum

Currency & Language



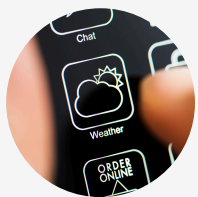
- Official currency of Portugal is Euro (€)
- Forum will be held in English - no translation

Telephone Services & Emergency Calls



- International dialing code of Portugal is +351
- Universal european emergency numbers 112 and 999

Weather



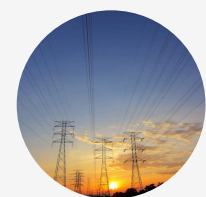
- February in Lisbon is typically cold, with occasional rain and moderate winds.

Photography



- Photos and videos will be taken during the event and may be used by the organisers and UCP for publications and websites
- Please contact the organisers if needed

Voltage



In Portugal, power plugs and sockets (outlets) of type F are used. The standard voltage is 230 V at a frequency of 50 Hz

Visa requirement

If you are uncertain whether you require a visa to travel to Portugal, please refer to the information available [here](#)



SAVE THE MAP!

